



## Thule Rapid System Kit 1660

# > Instructions

VOLKSWAGEN Beetle, 2-dr Coupé, 11-

VOLKSWAGEN Beetle, 3-dr Hatchback, 11-

The diagram is divided into four main sections:

- Top Left:** A dashed box containing a warning icon, a person reading a manual, and two instruction booklets labeled 'B' (Thule Rapid System Kit 1660) and 'A' (Thule Rapid System 754). An arrow points from 'B' to 'A', and another arrow points from 'A' to a car roof rack.
- Top Right:** A weight calculation diagram. It shows a bag labeled 'xx kg xx lbs' plus a rack labeled '7 kg 15,4 lbs' and two screws labeled '3 kg 6,6 lbs'. Below this, a box contains the text: 'Max. 40 kg' and 'Max. 88 lbs'.
- Bottom Left:** A dashed box containing a warning icon, three instruction booklets (A, B, and Security), and a person reading a manual.
- Bottom Right:** A diagram of a car with a roof rack. A speedometer shows a warning zone between 40 km/h (25 Mph) and 80 km/h (50 Mph), with a maximum speed of 130 km/h (80 Mph). A warning icon is placed above the speedometer.

ISO 11154-E

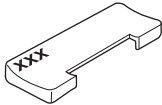
141660

C.20131128  
519-1660-04

Bring your life  
thule.com



163 x1



164 x1

204 x1

206 x1



1210 x2



1211 x2



x1



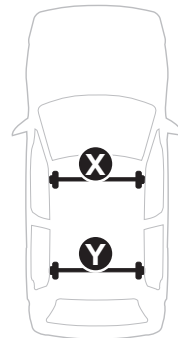
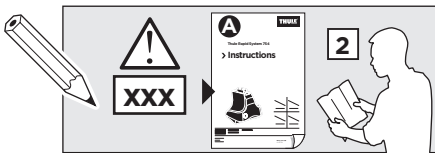
x1



x1

1

	X (scale)	X (mm)	X (inch)
<b>VOLKSWAGEN Beetle, 2-dr Coupé, 11-</b>	41	1061	41 <sup>3</sup> / <sub>4</sub>
<b>VOLKSWAGEN Beetle, 3-dr Hatchback, 11-</b>	41	1061	41 <sup>3</sup> / <sub>4</sub>

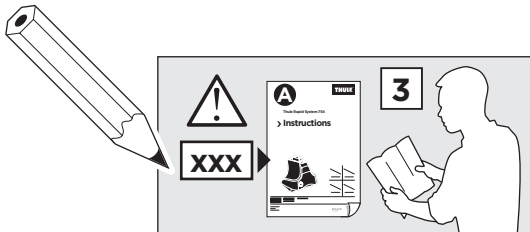
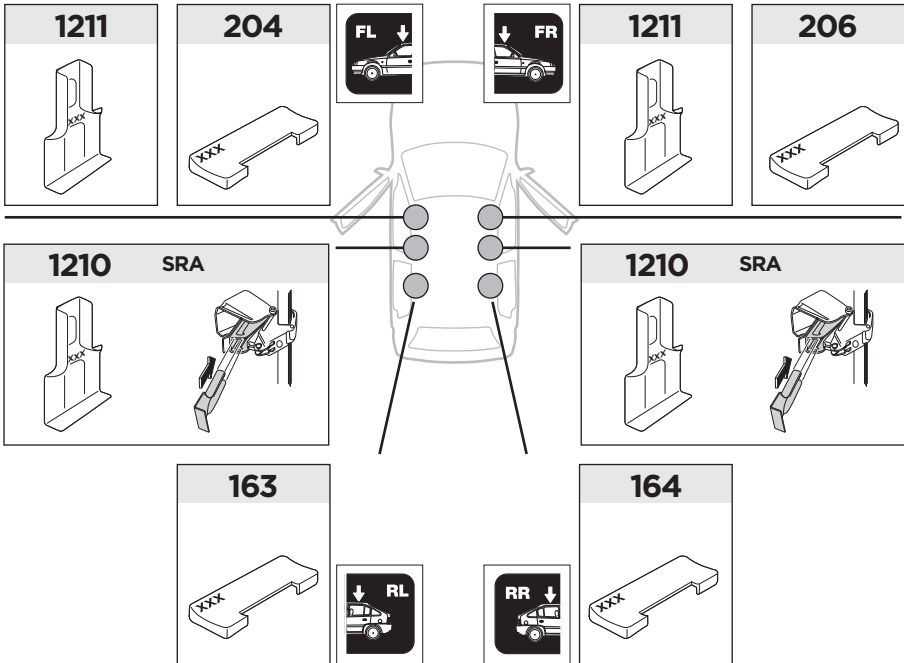
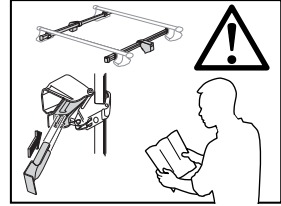


	Y (scale)	Y (mm)	Y (inch)
<b>VOLKSWAGEN Beetle, 2-dr Coupé, 11-</b>	37,5	1026	40 <sup>3</sup> / <sub>8</sub>
<b>VOLKSWAGEN Beetle, 3-dr Hatchback, 11-</b>	37,5	1026	40 <sup>3</sup> / <sub>8</sub>

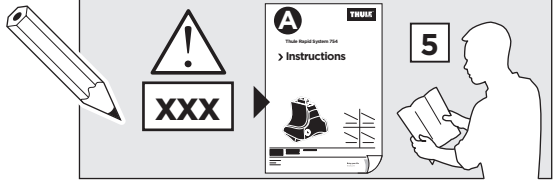
2

VOLKSWAGEN Beetle, 2-dr Coupé, 11-  
VOLKSWAGEN Beetle, 3-dr Hatchback, 11-

SRA



3



	W (mm)	Z (mm)	Y (mm)	W (inch)	Z (inch)	Y (inch)
<b>VOLKSWAGEN Beetle, 2-dr Coupé, 11-</b>	<b>160</b>	<b>700</b>	<b>425</b>	<b>6 1/4</b>	<b>16 3/4</b>	<b>13 3/8</b>
<b>VOLKSWAGEN Beetle, 3-dr Hatchback, 11-</b>	<b>160</b>	<b>700</b>	<b>425</b>	<b>6 1/4</b>	<b>16 3/4</b>	<b>13 3/8</b>

